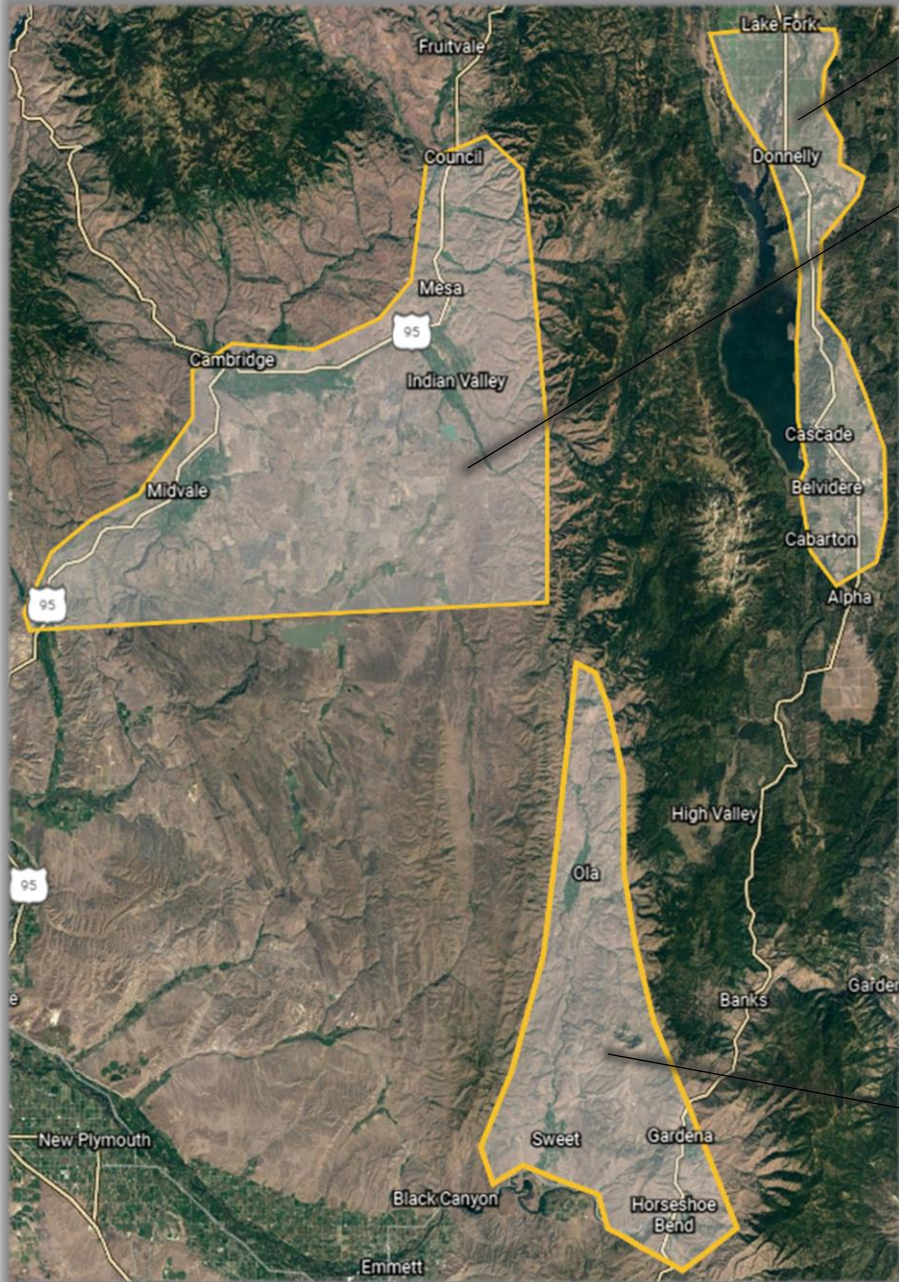


# 2021 Grasshopper Outbreak Locations



## **The Valley County Outbreak Area:**

*From Lake Fork south to Smiths Ferry and East-West to the Forest Service boundaries.*

## **The Washington County/Adams County Outbreak Area:**

*From Council south to Crane Creek reservoir and ~1 mile west of Hwy 95 to ~3 miles east of Indian Valley rd.*



## **The Oneida County/Bannock County Outbreak Area:**

*All of Oneida Co and the portions of Bannock Co to include McCammon south to Swanlake*

## **The Boise County/Gem County Outbreak Area:**

*From Horseshoe Bend/Hwy 52 north along the FS boundary on the eastern and northern boundaries and along the foothills on the western boundary.*